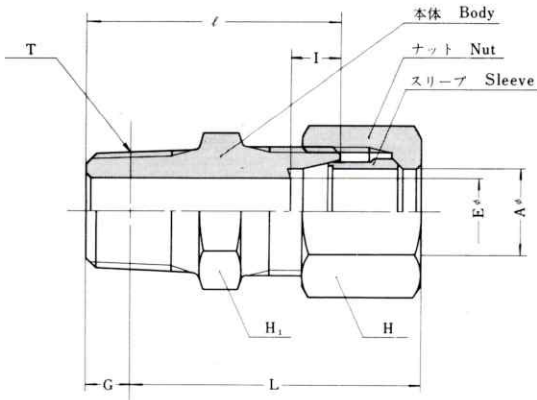


コネクタ(おす) MALE CONNECTOR

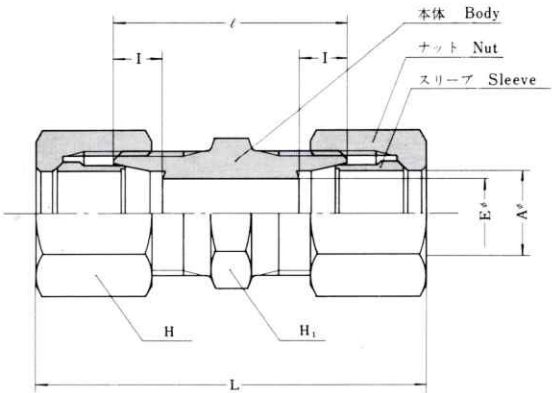


基準径の位置
Plane of hand tight

単位 Unit : mm

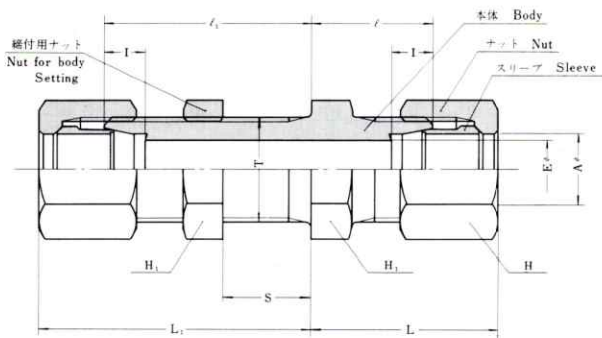
継手の呼び方 Designations	適用する 管の外径 A Tube O.D.	E Minimum Opening	基準径の 位置 G Normal en- gagement of pipe thread by hand	六角対辺 Width Across Hex. Flats		I	ℓ	(約) Approx. L	(PT) T
				H ₁	H				
* KC 4 -PT $\frac{1}{8}$ -B-1	4	2.5	3.97	10	10	6.5	23	26.5	$\frac{1}{8}$
* KC 6 -PT $\frac{1}{8}$ -B-1	6	4	3.97	10	12	6.5	24	28	$\frac{1}{8}$
* KC 6 -PT $\frac{1}{4}$ -B-1	6	4	6.01	14	12	6.5	29	31	$\frac{1}{4}$
* KC 8 -PT $\frac{1}{8}$ -B-1	8	4	3.97	12	14	6.5	25	29	$\frac{1}{8}$
* KC 8 -PT $\frac{1}{4}$ -B-1	8	6	6.01	14	14	6.5	29	31	$\frac{1}{4}$
* KC10-PT $\frac{1}{4}$ -B-1	10	6	6.01	14	17	6.5	30	32.5	$\frac{1}{4}$
* KC10-PT $\frac{3}{8}$ -B-1	10	8	6.35	17	17	6.5	32	34	$\frac{3}{8}$
KC12-PT $\frac{1}{4}$ -B-1	12	6	6.01	17	19	6.5	31	35	$\frac{1}{4}$
KC12-PT $\frac{3}{8}$ -B-1	12	8.5	6.35	17	19	6.5	32	35.5	$\frac{3}{8}$
KC15-PT $\frac{3}{8}$ -B-1	15	8.5	6.35	21	23	8	33	36	$\frac{3}{8}$
KC15-PT $\frac{1}{2}$ -B-1	15	12	8.16	23	23	8	37	38	$\frac{1}{2}$
KC20-PT $\frac{1}{2}$ -B-1	20	12	8.16	26	29	8	39	41	$\frac{1}{2}$
KC20-PT $\frac{3}{4}$ -B-1	20	17	9.53	29	29	8	42	42.5	$\frac{3}{4}$
KC25-PT $\frac{3}{4}$ -B-1	25	17	9.53	32	36	9	43	43.5	$\frac{3}{4}$
KC25-PT 1-B-1	25	20	10.39	36	36	9	48	47.5	1

ユニオン UNION



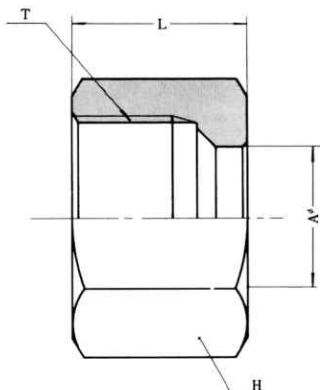
	A	E	H ₁	H	I	ℓ	L
KU 4-B-1	4	2.5	8	10	6.5	20	35
* KU 6-B-1	6	4	10	12	6.5	22	38
* KU 8-B-1	8	6	12	14	6.5	23	39
* KU 10-B-1	10	8	14	17	6.5	25	42
KU 12-B-1	12	10	17	19	6.5	26	46
KU 15-B-1	15	12	21	23	8	27	46
KU 20-B-1	20	17	26	29	8	30	50
KU 25-B-1	25	20	32	36	9	32	52

締付ユニオン BULKHEAD UNION



	A	E	H ₁	H	I	ℓ ₁	ℓ	L ₁	L	T	S Max Min	
KSU 4-B-1	4	2.5	12	10	6.5	28	13	35.5	20.5	8	15	2
KSU 6-B-1	6	4	14	12	6.5	30	15	38	23	10	15	2.5
KSU 8-B-1	8	6	17	14	6.5	31	16	39	24	12	15	2.5
KSU10-B-1	10	8	19	17	6.5	32	17	40.5	25.5	14	15	3
KSU12-B-1	12	10	21	19	6.5	33	18	43	28	16	15	3
KSU15-B-1	15	12	26	23	8	35	20	44.5	29.5	20	15	3
KSU20-B-1	20	17	32	29	8	38	23	48	33	26	15	3
KSU25-B-1	25	20	38	36	9	40	25	50	35	32	15	3

ナット NUT



	A	L	H	T
KN 4-B-1	4	10	10	M 8×1
KN 6-B-1	6	11	12	M 10×1.25
KN 8-B-1	8	12	14	M 12×1.25
KN 10-B-1	10	12	17	M 14×1.5
KN 12-B-1	12	13	19	M 16×1.5
KN 15-B-1	15	13	23	M 20×1.5
KN 20-B-1	20	13.5	29	M 26×1.5
KN 25-B-1	25	14	36	M 32×1.5